

biolitec® worldwide

biolitec biomedical technology GmbH, Distributor

Otto-Schott-Str. 15 · 07745 Jena · Germany
Phone: +49 3641 519 53 0
Fax: +49 3641 519 53 33

CeramOptec GmbH, Manufacturer

Siemensstr. 44 · 53121 Bonn · Germany
Phone: +49 228 979 67 0
Fax: +49 228 979 67 99

biolitec Italia SRL

Via Monza 133 · 20129 Milano · Italy
Phone: +39 0228 172 400
Fax: +39 0228 172 29

biolitec SIA

Kaniera iela 10a · Rīga 1063 · Latvia
Phone: +371 653 436 46
Fax: +371 653 076 78

biolitec SPb

Babushkina st., 36, b.1
Saint-Petersburg, 192171 · Russia
Phone: +7 812 4492936
Fax: +7 812 4493752

biolitec (M) Sdn. Bhd.

No.18, Jalan PJS. 7/21 · Brandar Sunway
46150 Petaling Jaya, Selangor D.E. · Malaysia
Phone: +603 56 32 71 28
Fax: +603 56 38 01 28

biolitec India Pvt. Ltd.

302B, 3rd Floor, Gold Tower, Residency Road
Bangalore 560025 · India
Phone: +91 80 2211 4955
Fax: +91 80 2211 4954

biolitec Ltd Sti.

Eski Uskudar yolu caddesi, Akay apartmanı · No:6 d:3
34752 Atasehir-Istanbul · Turkey
Phone: +90 216 574 7456
Fax: +90 216 574 7476

biolitec Inc.

515 A Shaker Road
East Long Meadow, MA 01028 · USA
Phone: +1 413 5 25 06 00
Fax: +1 413 5 25 06 11

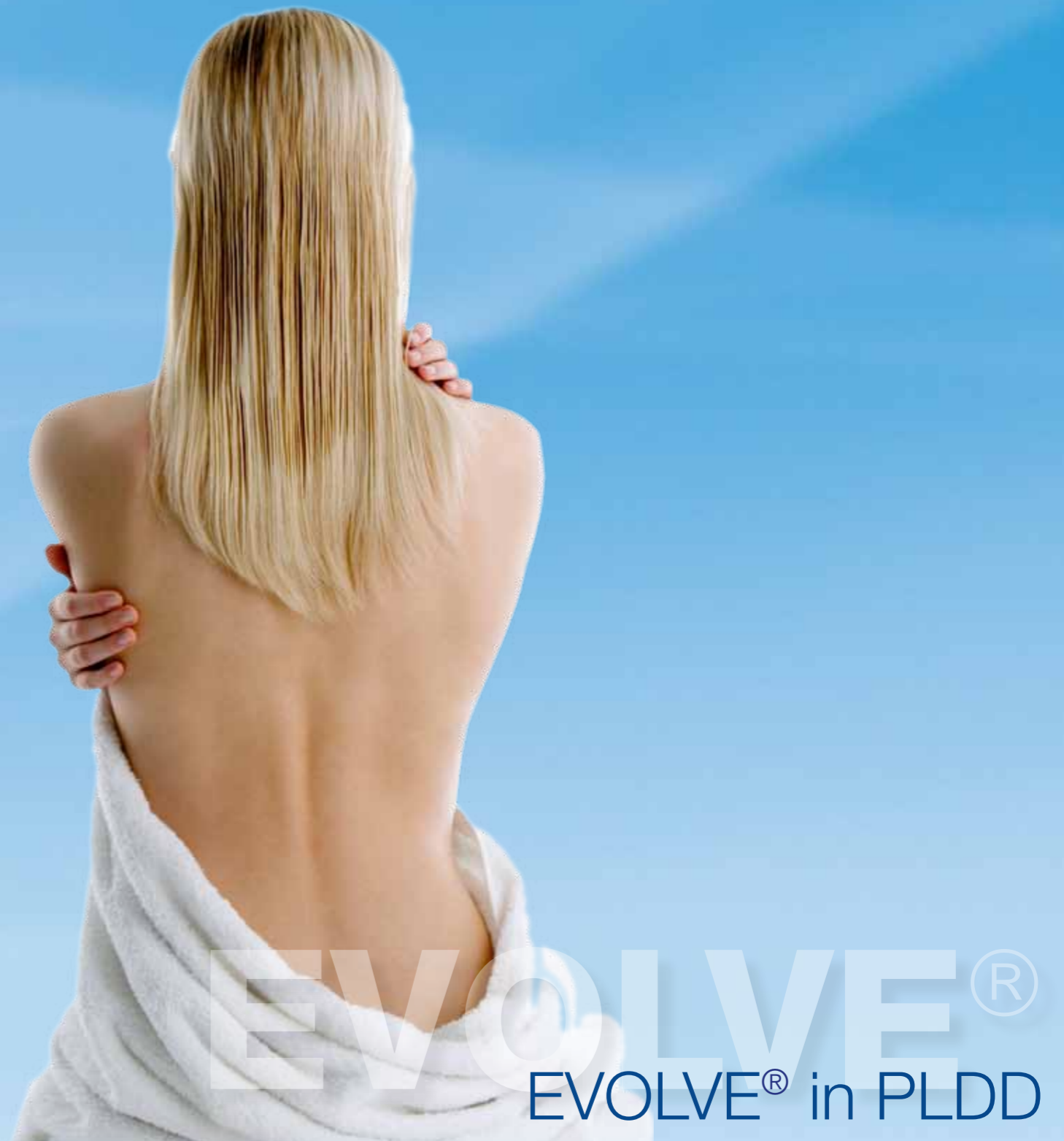
biolitec B.C.I.E.L.

Rua Antonio de Barros, 2391 · Tatuapé
São Paulo, 03401-001 · Brazil
Phone: +55 11 2093 8602
Fax: +55 11 2093 8602

biolitec FZ LLC

B/P 49 Unit 306 · P.O. Box 505072
Dubai Healthcare City · Dubai · UAE
Phone: +971 44 29 85 92
Fax: +971 44 29 85 91

©biolitec / PLDD EN / Rev. E / 25102011



biolitec®, Ceralas® and EVOLVE® are registered trademarks owned by biolitec®.



biolitec AG

Otto-Schott-Str. 15 · 07745 Jena, Germany

Phone: +49 3641 519 53 0 · Fax: +49 3641 519 53 33

E-Mail: info@biolitec.de · http://www.biolitec.com

www.biolitec.com

Innovative microsurgical Solution for
Percutaneous Laser Disc Decompression



EVOLVE®

EVOLVE® in PLDD

The technological Evolution for a new Dimension in Laser Microsurgery

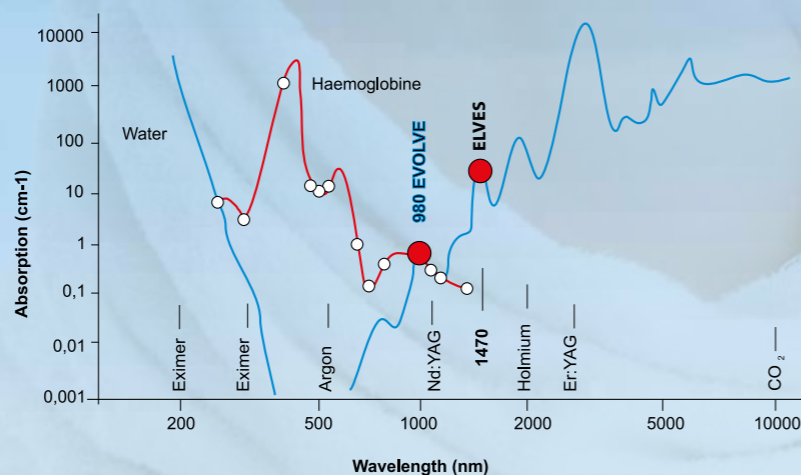
EVOLVE® is innovatively designed for safe, effective and flexible use in all surgical disciplines. It provides a range of mini-invasive and micro-invasive solutions to broaden your therapeutic options.

Tissue Interaction with the Ceralas® Laser System

The Ceralas® E 980 laser platform is based on the absorption characteristics of the 980 nm wavelength, which, thanks to its interaction with H₂O and hemoglobin, enables procedures to be carried out safely and accurately, especially in proximity of delicate anatomical structures.

Microsurgical precision is guaranteed by the technical characteristics of the special Ceralas® laser fibres, which allow surgical effectiveness, ease of handling and maximum safety.

The wide range of laser fibres available in various sizes (200 to 1,000 microns) and shapes (tapered, flat, spherical), combined with the exclusive and patented kits for EVOLVE® procedures, enables incisions, vaporization and coagulation to be performed selectively and accurately on the basis of the clinician's therapeutic needs.



Specifications	CERALAS® E
Wavelength	980 nm
Optical output	30 watts at the distal end of the optical fiber (7.5 watts with a 220µm fiber)
Aiming beam	635nm, continuously adjustable brightness, max. 4 mW
Operating modes	CW, Pulse Mode, Derma Mode
Pulse length / interval	0,01 – 100 sec
Power supply	100 -240 VAC; 50-60 HZ
Dimensions	22 cm x 26 cm x 38 cm /HxBxT
Weight (less carrying case)	7.5 kg
For vein treatment extendable	

502200830	PLDD Kit 360/18/150 biolitec, Y-Click Adapter, ID-Technology
502200835	PLDD Kit 360/21/150 biolitec, Y-Click Adapter, ID-Technology

Visible and invisible laser radiation
Avoid eye or skin exposure to
direct or indirect radiation
CLASS 4 LASER PRODUCT

Diode-Laser 980 +/- 30nm CW 30W (MAX)
Diode-Laser 635 +/- 15nm CW 4mW (MAX)
EN 60825-1:2007 EN 60825-2:2014



CE 1275

CeramOptec GmbH

Denaturisation of the Nucleus

EVOLVE® in Percutaneous Laser Disc Decompression (PLDD)

Disc decompression achieved through denaturisation of the nucleus by means of laser energy is an internally accepted method for elective treatment in specific pathological conditions.

EVOLVE® has innovative features both in terms of the specific and effective absorption of the wavelength (980 nm) and in terms of the use of specific biolitec® PLDD Kits containing the special 220 micron fibre for micro-invasive access (21 G) to the disc area.

Mode of Percutaneous Laser Disc Decompression

- Denaturation and shrinking of the disc tissue
- Obliteration of sensible, planning nerves inside the disc
- Suppression of pain transmitters in the disc
- Stabilization of the fibrous rin

Benefits

- Excellent tissue interaction
- Micro-invasive percutaneous access
- The procedure is associated with minimal pain
- It can be carried out under local anesthetic
- No risk of scarring
- A faster return to normal activities: In most cases, patients do not need to stay at a rehabilitation clinic

Accessories

- Exclusive PLDD kits with flexible 220 micron (21G) and 360 micron (18G) laser fibres
- PLDD kit with the unique 600 micron (18G) fibre for its use with EVOLVE®



Surgical Effectiveness, Ease of Handling and maximum Safety

Application fields

- Contained herniated lumbar discs
- Herniated cervical discs
- Laser Denervation for chronic pain at facette, shoulder, hip, elbow
- Further neurosurgical applications